

JOURNAL OF THE AMERICAN PHARMACEUTICAL ASSOCIATION

VOL. XXII

MAY, 1933

No. 5

PROGRESS OF THE AMERICAN PHARMACY BUILDING.

THE picture on the page facing this was made from a photograph of a model of the building to be exhibited in Chicago at the World's Fair. The inscription reads:

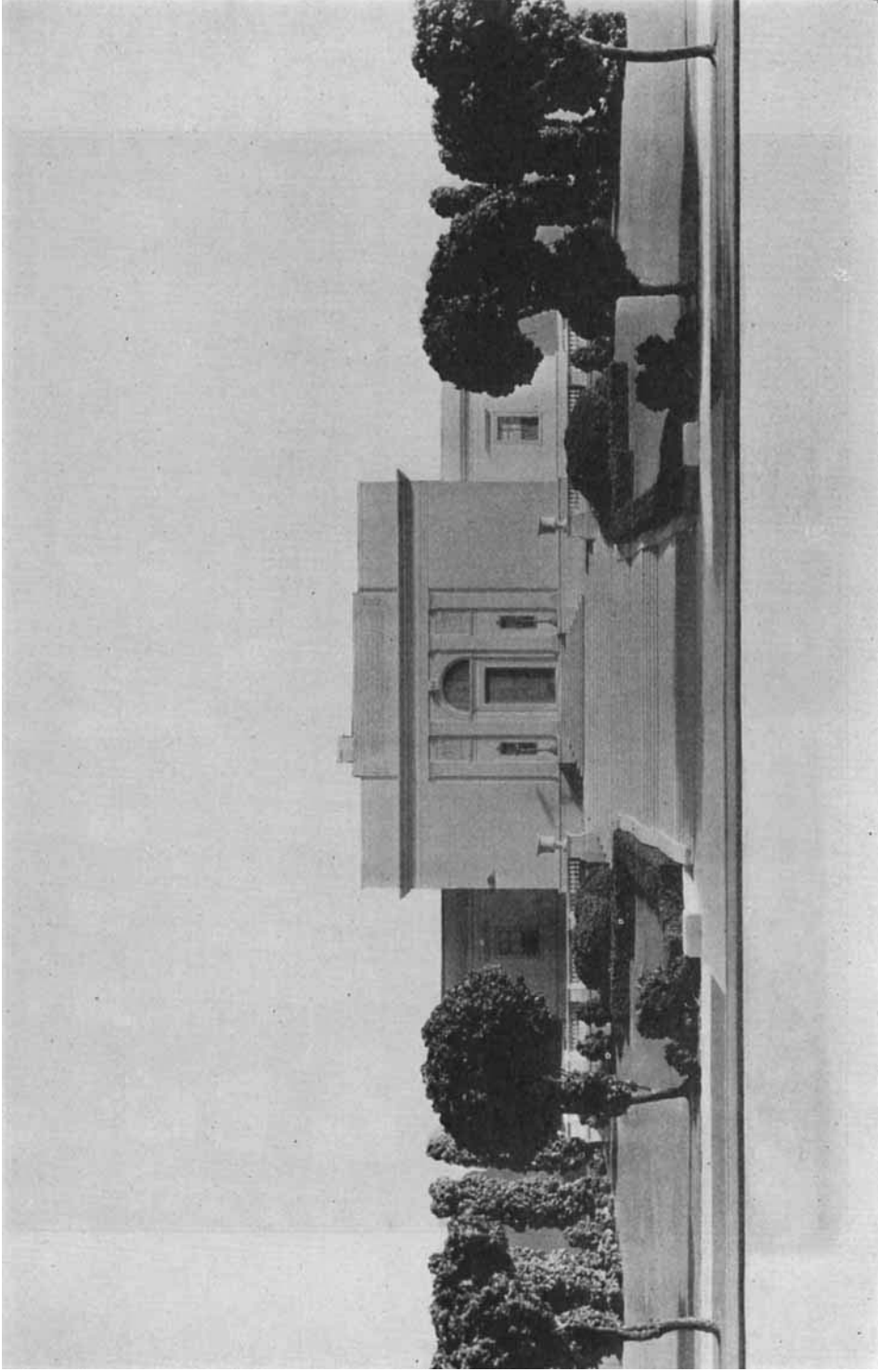
"AMERICAN INSTITUTE OF PHARMACY."

"This Building is dedicated to those who have given of their thought and endeavor to the improvement of Public Health and to the further advancement of Science in Pharmacy."



The half-tone above, shows the status of the building at the time the photograph was taken about a month ago. The interior work is progressing rapidly; the landscaping is under way.

The model, as part of the Pharmacy Exhibit, will be seen by millions of visitors, estimated at 45,000,000. A brief editorial comment may be found in the April JOURNAL; see also page 1 and page 83, January and February issues, respectively.



Model of the American Pharmacy Building, now in Science Hall, World's Fair, Chicago, modeled by Bertram L. Keyes; photo by Hughes Company.